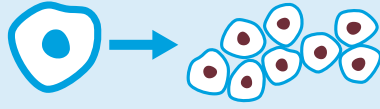


Mantle Cell Lymphoma (MCL)

A rare and aggressive B-cell malignancy

What is Mantle Cell Lymphoma?^{1,2}

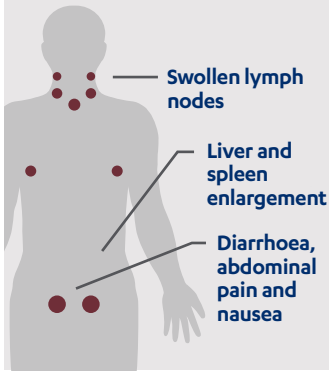
MCL affects the lymphatic system and is an aggressive form of blood cancer which originates from B cells, a type of white blood cell (lymphocyte)



MCL typically results from a malignant transformation of a B lymphocyte in the outer edge of a lymph node follicle (the mantle zone).

These malignant B cells usually manifest in the lymph nodes first, but can spread to other parts of the lymphatic and extralymphatic system where they may build up in large numbers. Malignant B cells can accumulate within the bone marrow, liver, spleen or bowel.

Signs and Symptoms^{2,3}



Excessive weight loss

Recurrent fevers, heavy sweating at night



Persistent fatigue

Prevalence and Patients^{1,4}



MCL is more prevalent in men

65

Median age at diagnosis

4-5 Years

Median overall survival

For more information on disease burden and prevalence please visit www.diseaselens.com

Diagnosis³

Unfortunately, due to its ability to grow aggressively and spread quickly, people with MCL are often diagnosed in the later stages of the disease

Diagnosis and staging of MCL may include the following examinations:



Physical examination



Blood and other laboratory tests



Biopsy



Imaging tests (X-rays or CT scans)

Staging⁵

The following stages are most often used to determine the extent of MCL:



Treatment^{* 6,7,8,9,10,11}

Patients commonly receive multiple treatments over the course of their disease



Chemo-immunotherapy



Radiation therapy



Biologic therapy



Stem cell transplant therapy



Targeted non-chemo agents

MCL can be a challenging disease to treat. Many patients will relapse or become resistant to treatment.

MCL treatments have improved in recent years. However, MCL remains a serious and fatal malignancy for which there is a high unmet need for new treatments. Many promising new therapies are currently being investigated.¹²

MAKE BLOOD CANCER VISIBLE

People impacted by blood cancer need more than treatment and care. To improve awareness and further support patients and their families, Janssen has launched 'Make Blood Cancer Visible' - a campaign to get people talking about blood cancers and bring forward patient perspectives.

#LETSTALKABOUTBLOODCANCER

visit www.facebook.com/letstalkaboutbloodcancer

*All medicines and therapies have side effects; patients should talk to their doctors about which therapies are appropriate for them

PHEM/IBR/0714/0006(1)
February 2016

Janssen Oncology

Mantle Cell Lymphoma (MCL)

A rare and aggressive B-cell malignancy

References

1. Leukemia and Lymphoma Society. Mantle cell lymphoma facts.
Available at: <http://www.lls.org/content/nationalcontent/resourcecenter/freeducationmaterials/lymphoma/pdf/mantlecelllymphoma.pdf>
Last accessed February 2016.
2. Cancer Research UK. Mantle cell lymphoma.
Available at: <http://www.cancerresearchuk.org/cancer-help/type/non-hodgkins-lymphoma/about/types/mantle-cell-lymphoma>
Last accessed February 2016.
3. Macmillan Cancer Support. Mantle cell lymphoma.
Available at: <http://www.macmillan.org.uk/Cancerinformation/Cancertypes/Lymphomanon-Hodgkin/TypesofNHL/Mantlecell.aspx>
Last accessed February 2016.
4. Herrmann A, Hoster E, Zwingers T, et al. Improvement of overall survival in advanced stage mantle cell lymphoma. *J Clin Oncol*. 2009;27:511-8.
5. National Cancer Institute. Stages of adult non-Hodgkin lymphoma.
Available at: <http://www.cancer.gov/cancertopics/pdq/treatment/adult-non-hodgkins/Patient/page2>
Last accessed February 2016.
6. American Cancer Society. Chemotherapy – what it is, how it helps.
Available at:
<http://www.cancer.org/treatment/treatmentsandsideeffects/treatmenttypes/chemotherapy/whatitishowithelps/chemo-what-it-is-questions-about-chemo>
Last accessed February 2016.
7. Cancer Research UK. Steroid therapy for non Hodgkin lymphoma.
Available at: <http://www.cancerresearchuk.org/cancer-help/type/non-hodgkins-lymphoma/treatment/steroid-therapy-for-non-hodgkins-lymphoma>
Last accessed February 2016.
8. American Cancer Society. Radiation therapy – what it is, how it helps.
Available at: <http://www.cancer.org/acs/groups/cid/documents/webcontent/003299-pdf.pdf>
Last accessed February 2016.
9. National Cancer Institute. Biological therapies for cancer.
Available at: <http://www.cancer.gov/about-cancer/treatment/types/immunotherapy/bio-therapies-fact-sheet>
Last accessed February 2016.
10. American Cancer Society. Stem cell transplant.
Available at: <http://www.cancer.org/acs/groups/cid/documents/webcontent/003215-pdf.pdf>
Last accessed February 2016.
11. Alinari L, Christian B, Baiocchi R. Novel targeted therapies for mantle cell lymphoma. *Oncotarget*. 2012;3:203-11.
12. Cancer Research UK. Types of treatment for non-Hodgkin lymphoma.
Available at: <http://www.cancerresearchuk.org/cancer-help/type/non-hodgkins-lymphoma/treatment/types>
Last accessed February 2016.



People impacted by blood cancer need more than treatment and care. To improve awareness and further support patients and their families, Janssen has launched 'Make Blood Cancer Visible' - a campaign to get people talking about blood cancers and bring forward patient perspectives.

#LETSTALKABOUTBLOODCANCER

visit www.facebook.com/letstalkaboutbloodcancer